



Moyea Software

Flash Video Server

FVS Console Manual

# Moyea Software Company

## Flash Video Server

## FVS Console Manual



October, 2008

Document version: 1.1.1.0

Copyright© 2008 Moyea Software Co., Ltd. All rights reserved.

[www.moyea.com](http://www.moyea.com)

## FVS Console Manual

FVS Console Manual.....	2
1. Overview.....	3
2. FVS Manager.....	3
2.1 Login.....	3
2.2 Main Interface.....	4
2.2.1 Add Virtual Host.....	5
2.2.2 Modify Virtual Host State.....	6
2.2.3 Delete Virtual Host.....	7
2.3 Configuration.....	8
2.3.1 Resource Configuration.....	9
2.3.2 Abnormal Log.....	10
2.4 Other.....	10
2.4.1 System Admin Password.....	11
2.4.2 VH Admin Password.....	13
2.5 Register.....	13
3. Virtual Host Manager.....	15
3.1 Login.....	15
3.2 Main Interface.....	16
3.2.1 Add Application.....	17
3.2.2 Add Instance.....	18
3.2.3 Delete Application.....	19
3.2.4 Delete Instance.....	20
3.3 Configuration.....	20
3.3.1 Fields Description.....	21
3.3.2 Rules for IP Filter.....	22
3.4 User Management.....	22
3.4.1 Add Group.....	24
3.4.2 Delete Group.....	25
3.4.3 Add User.....	26
3.4.4 Modify User Information.....	27
3.4.5 Delete User.....	28
3.4.6 Modify Virtual Host Administrator Password.....	29
3.4.7 Search Users.....	30
3.5 File Management.....	30

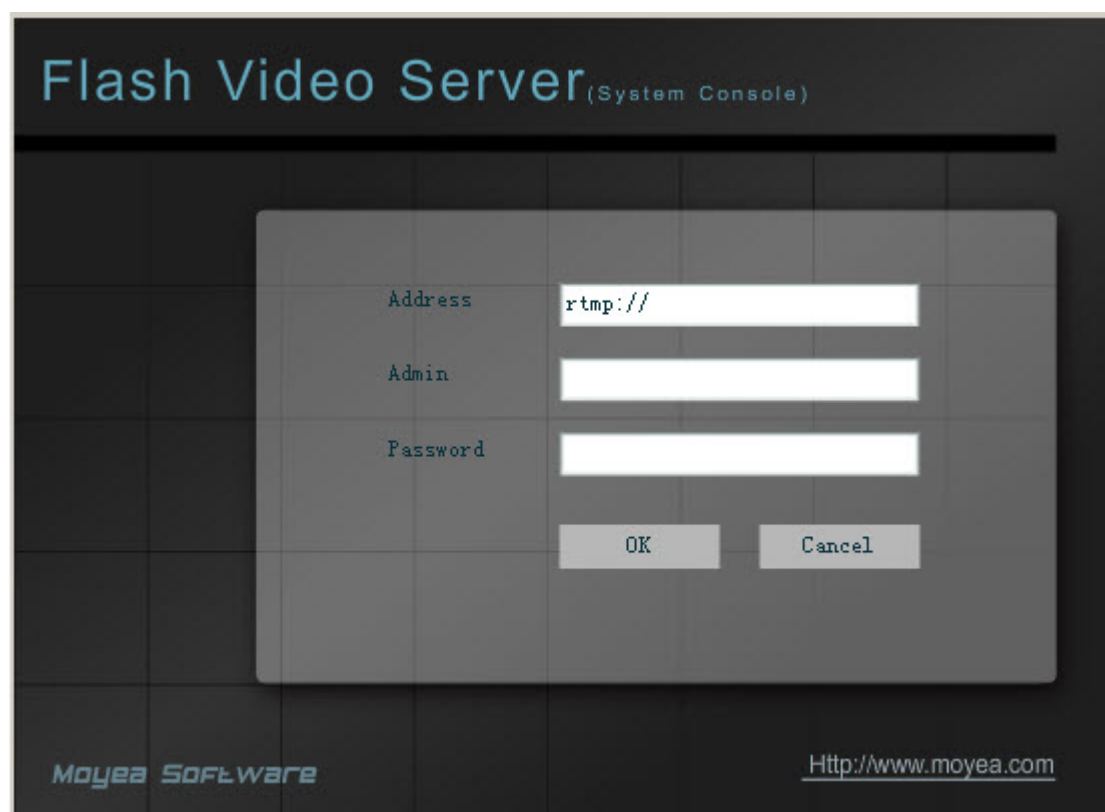
## 1. Overview

This guide aims to tell you how to operate “FVS (Flash Video Server) Manager” and “VH (Virtual Host) Manager” of Flash Video Server, as well as the meaning of each field.

## 2. FVS Manager

### 2.1 Login

This interface is for you to login:



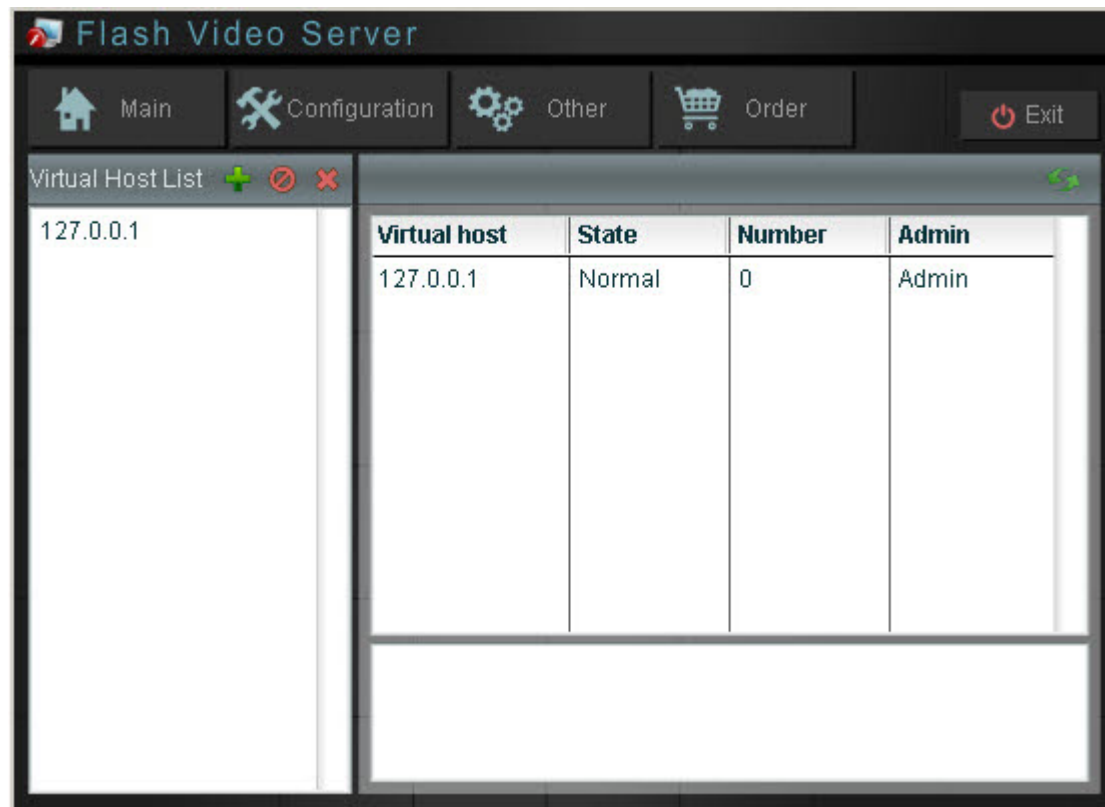
**Address:** Server IP address appointed by FVS administrator at logon, system default value as “127.0.0.1” for the first time. If remote administration is not allowed, only local IP can be used.

**Admin:** FVS administrator name.

**Password:** FVS administrator password.

## 2.2 Main Interface

This is the main interface:



**Main:** Just the main interface above, which is for the purpose of managing virtual hosts in the system:

All the virtual hosts in the system will be listed in the **Virtual Host List** on the left, specific information of the virtual hosts such as state, will be displayed in the box on the right.



: Add virtual host.



: Modify virtual host state; virtual host state is active or disabled. When the virtual host state is active, it is ready to operate, that is to say, the user can login and manage the host. When the state is disabled, the host can't work and the user login is not allowed.



: Delete virtual host, a warning dialog box will pop up to remind you that this is a dangerous action, because the action will lead to the following consequence:

The virtual host can't work in the system and its state can't be recovered, If you do need to delete the virtual host and all the data of it forever, please remove the files from the installation folder manually.

PS: Before you modify or delete virtual host, you should select the virtual host on the left, then click the corresponding button to operate.

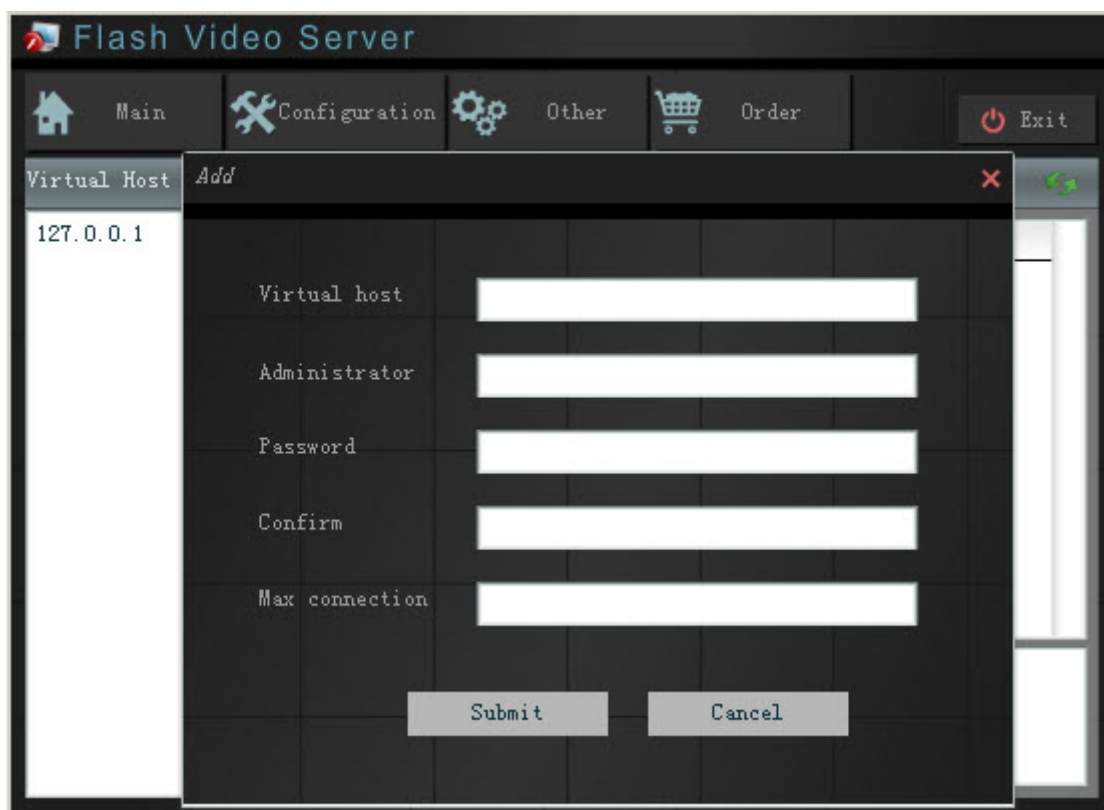
**Configuration:** Go to the configuration screen.

**Other:** Go to other screens.

**Order:** Register for the full version.

**Exit:** Quit the management interface.

## 2.2.1 Add Virtual Host



The screenshot shows the Flash Video Server console interface. At the top, there is a navigation bar with icons and labels for 'Main', 'Configuration', 'Other', 'Order', and 'Exit'. Below this, a 'Virtual Host' list on the left contains the entry '127.0.0.1'. A modal dialog box titled 'Add' is open, allowing the user to add a new virtual host. The dialog has the following fields:

- Virtual host:** A text input field.
- Administrator:** A text input field.
- Password:** A text input field.
- Confirm:** A text input field.
- Max connection:** A text input field.

At the bottom of the dialog, there are two buttons: 'Submit' and 'Cancel'.

**Virtual host:** Name of the virtual host you wish to add. Normally, here is the domain name or IP address of the virtual host.


**Administrator:** Name of the virtual host administrator.

**Password:** Password of the virtual host administrator.

**Confirm:** Confirm the password above.

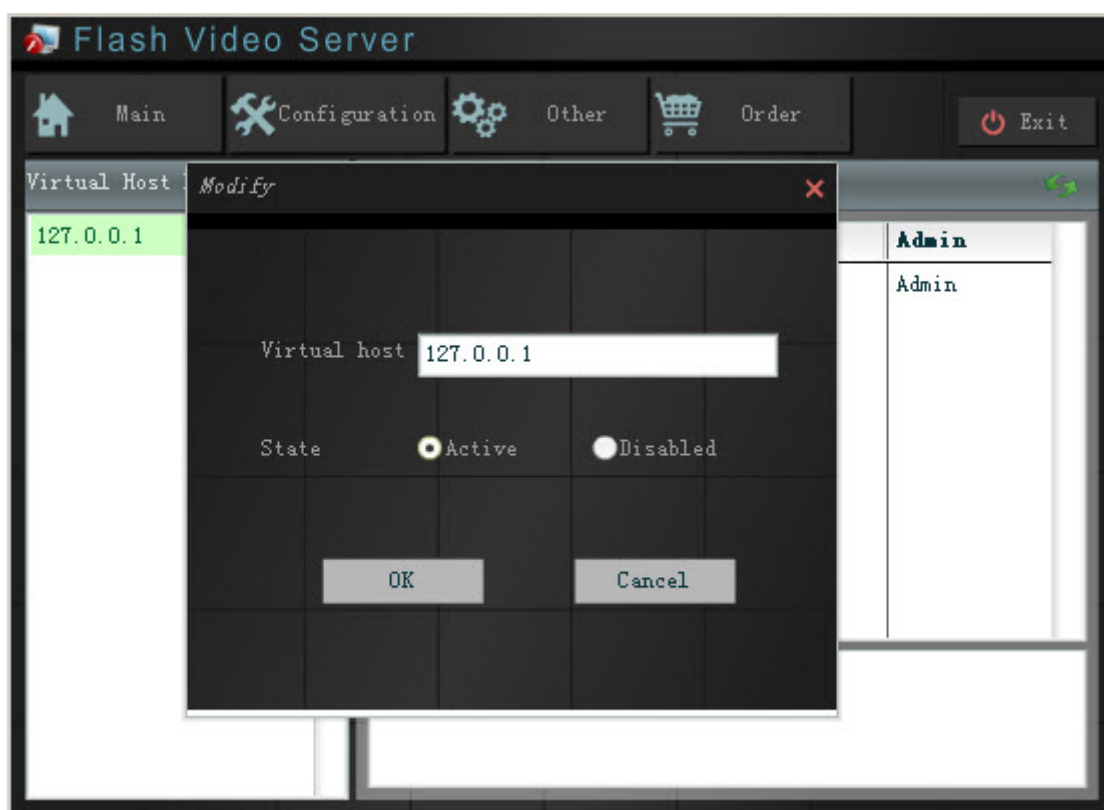
**Max connection:** Max connection count allowed by the virtual host.

**Submit:** Confirm to add the virtual host to FVS and run the host in the system.

**Cancel:** Back to the previous interface (no virtual host added) by clicking “Cancel” or .

## 2.2.2 Modify Virtual Host State

This is the management interface:




**Virtual host:** Name of the virtual host you wish to modify.

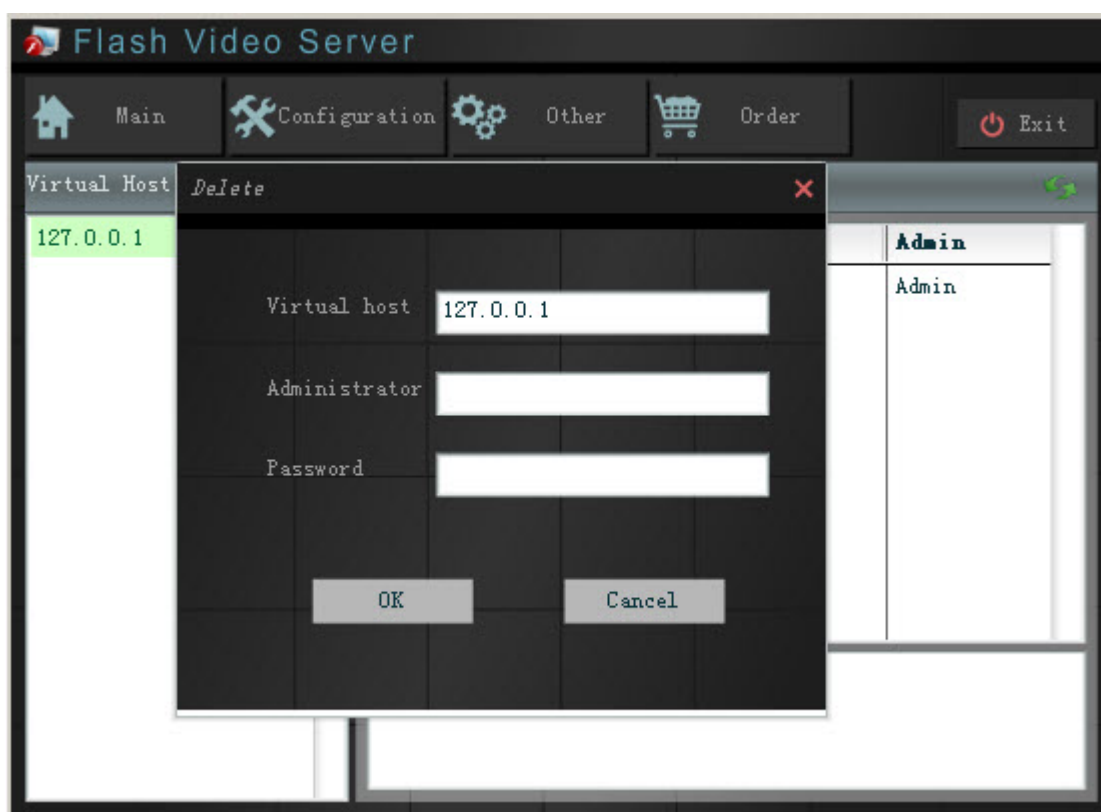
**State:** State of the virtual host you wish to set. “Active” means the host can work and allows

users to login. “**Disabled**” means the host is forbidden to work.

**OK:** Confirm the modification to the virtual host state.

**Cancel:** Back to the previous interface (no modification) by clicking “**Cancel**” or .

## 2.2.3 Delete Virtual Host



**Virtual host:** Name of the virtual host you wish to delete.

**Administrator:** Name of FVS administrator.

**Password:** Password of FVS administrator.

**OK:** Confirm to delete the virtual host.

Note: After deletion, files named after this virtual host under the virtual host folder of FVS installation directory will still exist; if necessary, you can kill the host completely by deleting the files manually.


For example:

If the FVS is installed in the following directory:

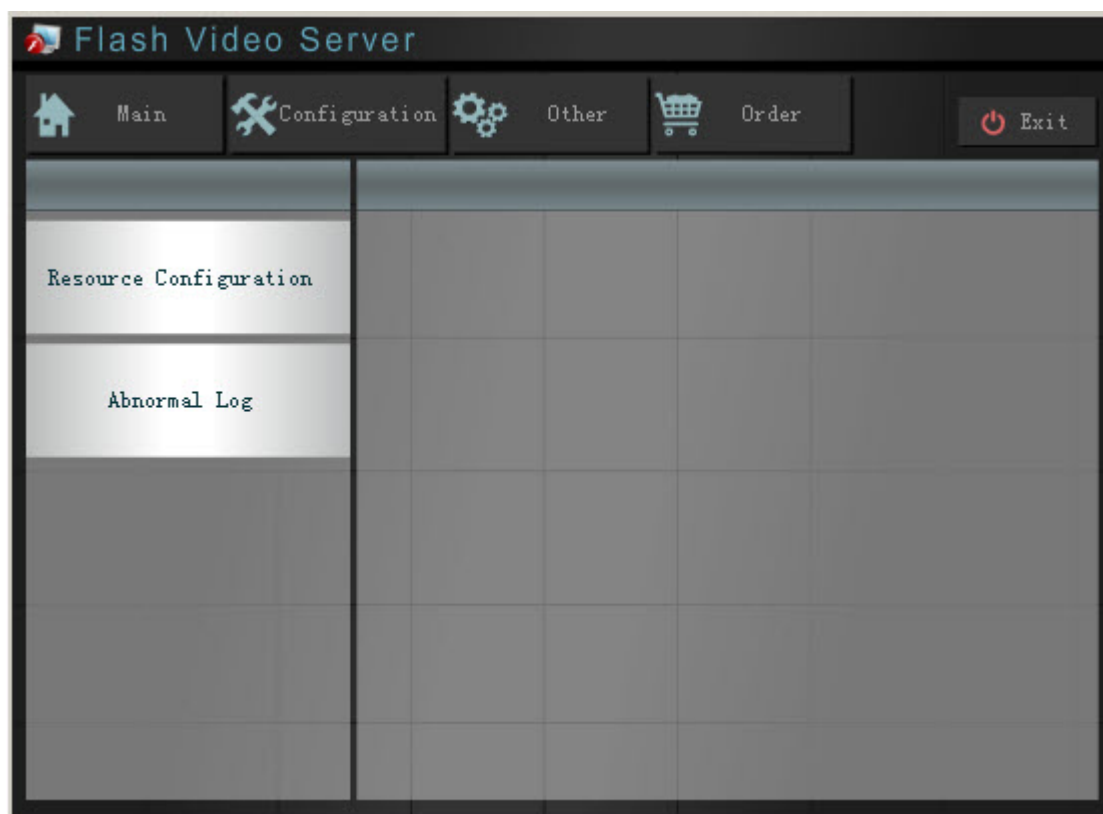
“X:\Program Files\Moyea\Flash Video Server”

You can delete the virtual host folder in the following directory:

“X:\ProgramFiles\Moyea\FlashVideoServer\VHost\”.

**Cancel:** Back to the previous interface (no virtual host deleted) by clicking “Cancel” or .

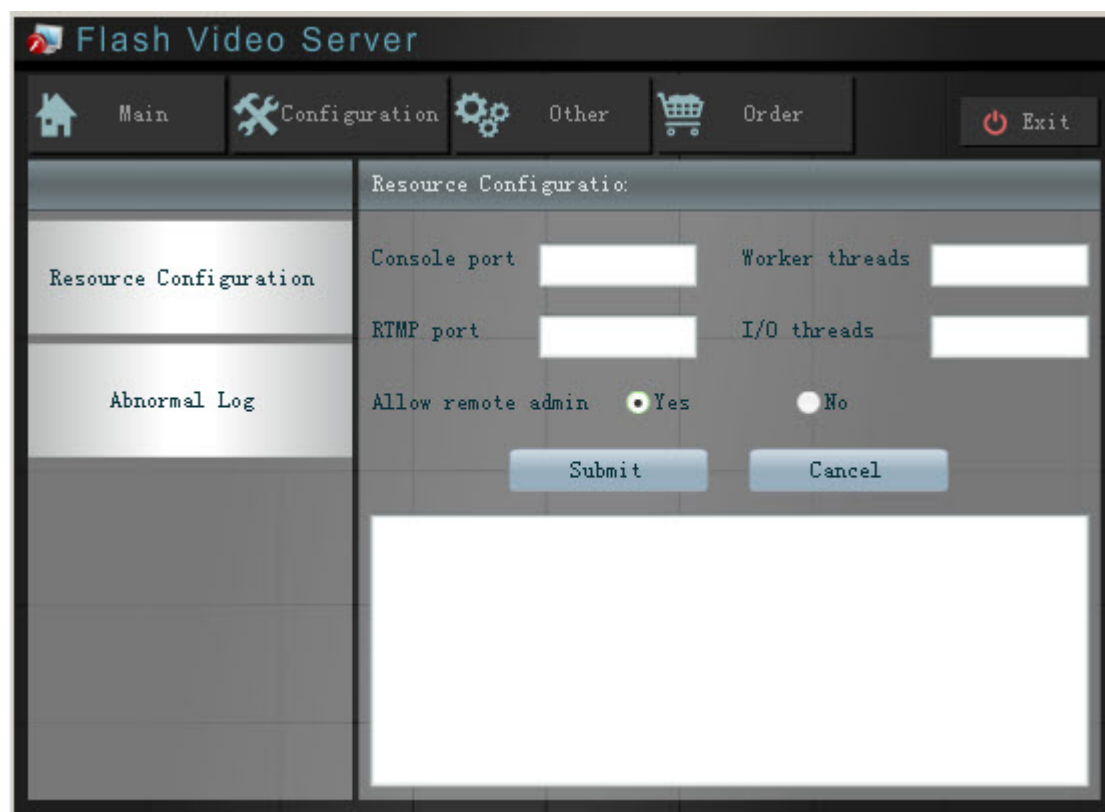
## 2.3 Configuration



**Resource Configuration:** Click this button to enter the resource configuration interface.

**Abnormal Log:** Go to the abnormal log interface by clicking this button.

## 2.3.1 Resource Configuration



**Console port:** Port of the virtual host administrator login interface.

**Worker threads:** Job thread amount of the server.

**RTMP port:** Port of the virtual host user login interface. RTMP: Real-Time Messaging Protocol, an unencrypted TCP/IP protocol designed for high-speed transmission of audio, video, and data messages.

**I/O threads:** The number of I/O threads handling RTMP protocol, default is the server's CPU number\*2.

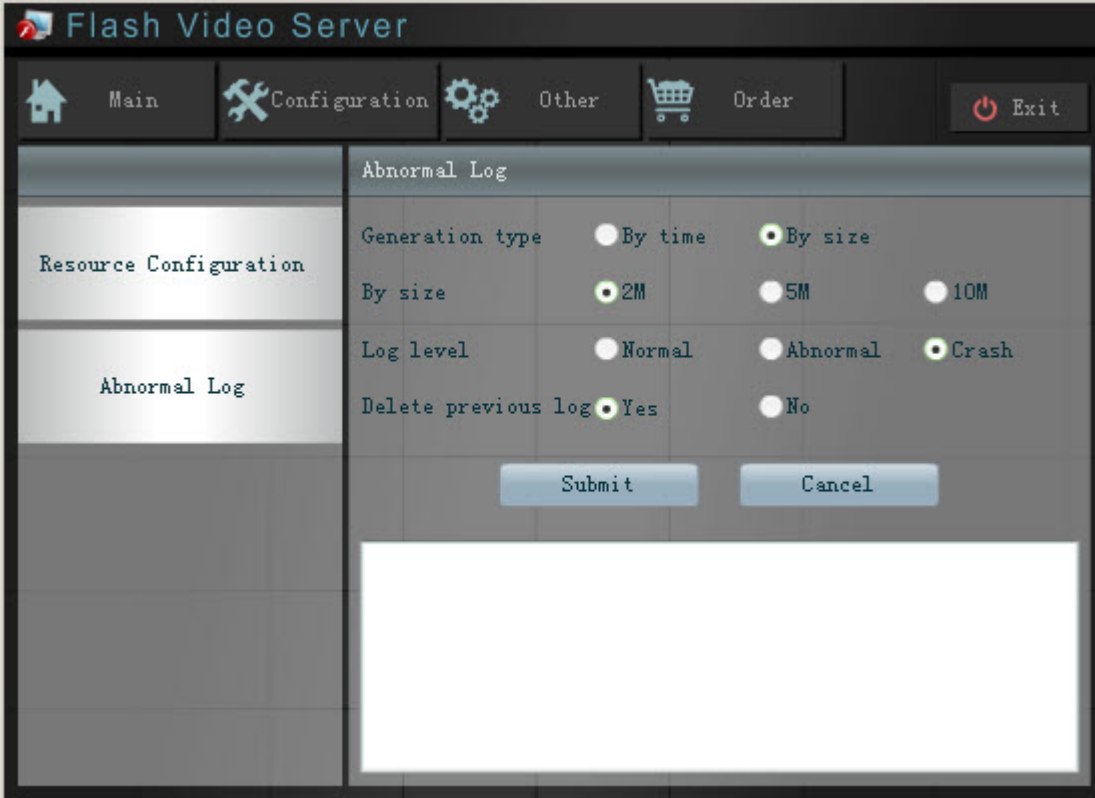
**Allow remote admin:** Check **Yes** means FVS administrator remote login is allowed, **No** is just the reverse of **Yes**.

**Submit:** Submit configuration requests to the system. (These configurations will take effect after the system restart).

**Cancel:** Back to the previous interface (no request submitted) by clicking this button.

## 2.3.2 Abnormal Log

This interface is for recording the information when the system is crashed or abnormal, so as to provide the requested messages for checking system running situation.



Flash Video Server

Main
Configuration
Other
Order
Exit

Resource Configuration

Abnormal Log

### Abnormal Log

Generation type

☐ By time
 ☒ By size

By size

☒ 2M
 ☐ 5M
 ☐ 10M

Log level

☐ Normal
 ☐ Abnormal
 ☒ Crash

Delete previous log

☒ Yes
 ☐ No

Submit

Cancel

**Generation type:** Generation type of abnormal log.

**By time:** Generate abnormal log every day, every 3 days or every 7 days.

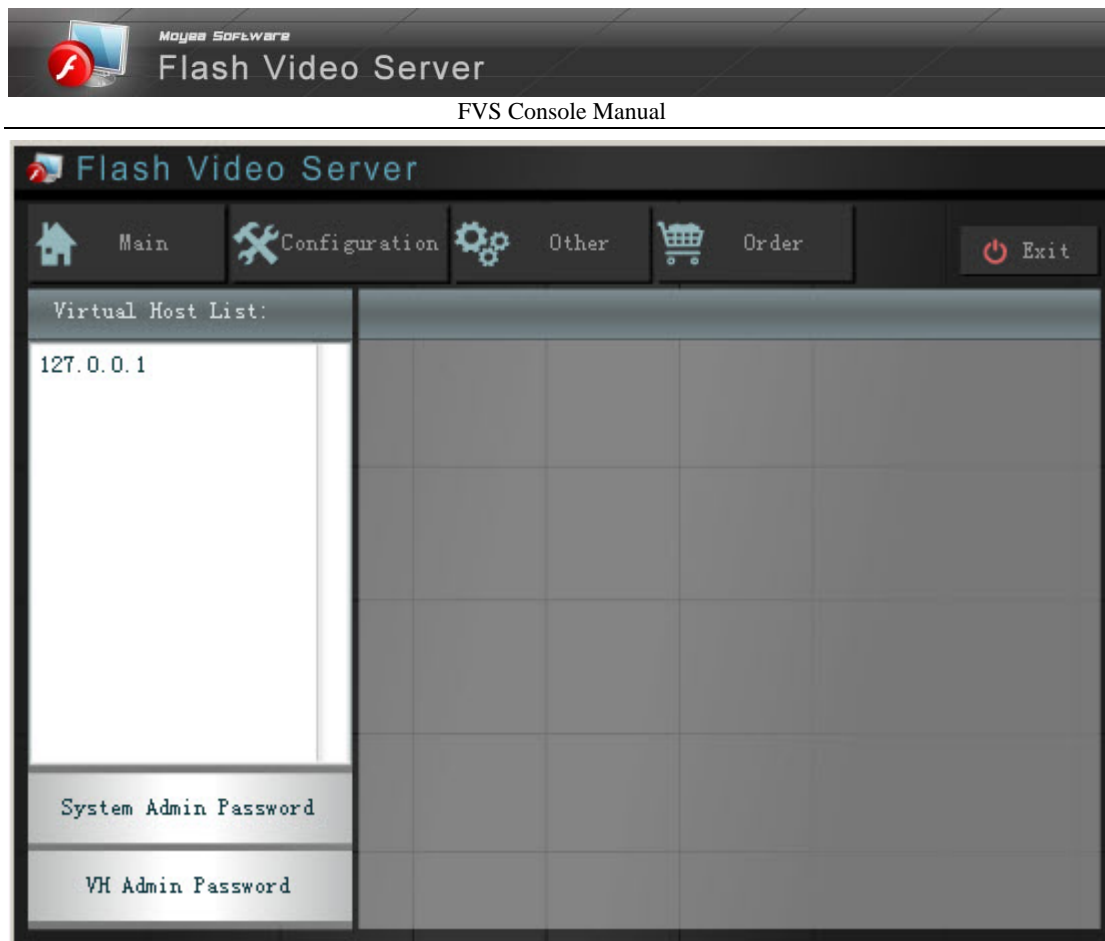
**By size:** Generate abnormal log automatically when its size is 2M, 5M or 10M.

**Log level:** Abnormal log will exist only if the system state is equal or greater than the level you checked.

**Delete previous log:** You can choose whether to delete the previous logs every time as the system start up. Abnormal log holds information when the system is crashed or abnormal, if needed, it can be deleted to save space.

## 2.4 Other

Here you can do some other configuration such as FVS administrator password modification.




**Virtual Host List:** All virtual hosts in the system currently.

**System Admin Password:** Click here to modify the system administrator password.

**VH Admin Password:** You should check a virtual host before clicking here to modify the virtual host administrator password.

### 2.4.1 System Admin Password

Click “**System Admin Password**” to enter this interface:





Moyea Software


Flash Video Server


FVS Console Manual


Flash Video Server

 Main

 Configuration

 Other

 Order

 Exit

Virtual Host List:

127.0.0.1

System Admin Password

VH Admin Password

System admin

Old password

Password

Confirm

Submit

Cancel

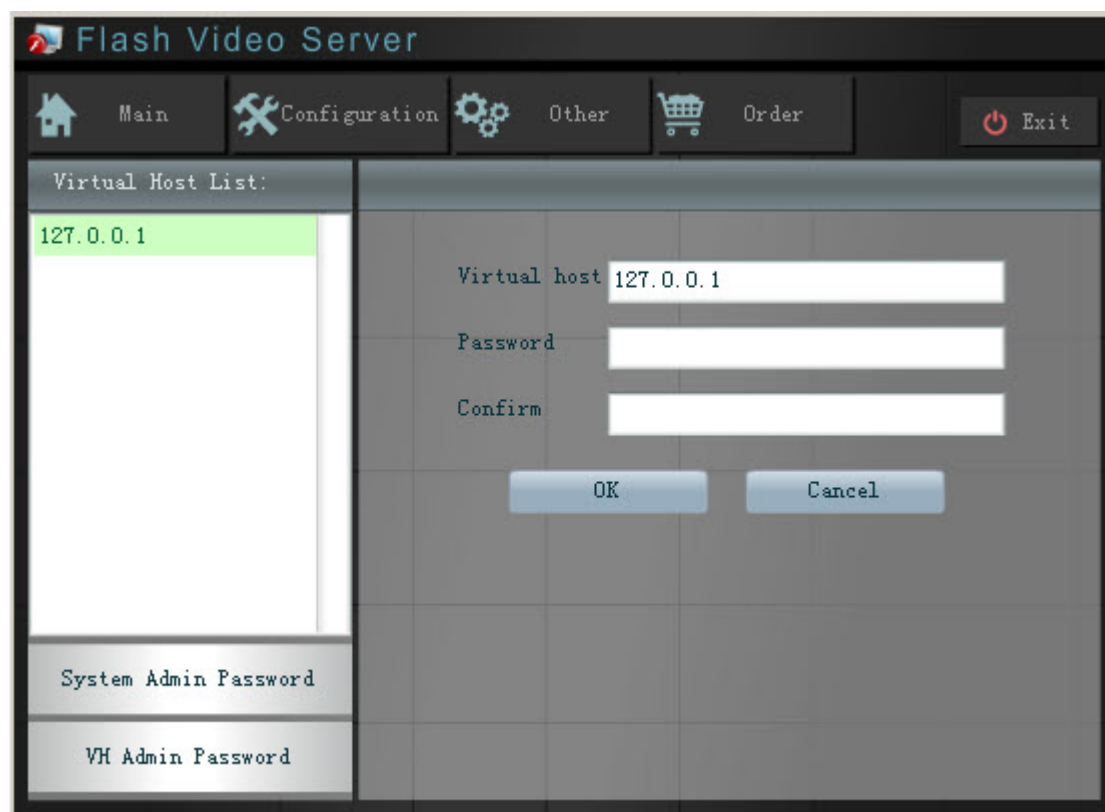
**System admin:** Name of system administrator.

**Old password:** In use password of system administrator.

**Password:** New password of system administrator.

**Confirm:** Type the new password again.

## 2.4.2 VH Admin Password



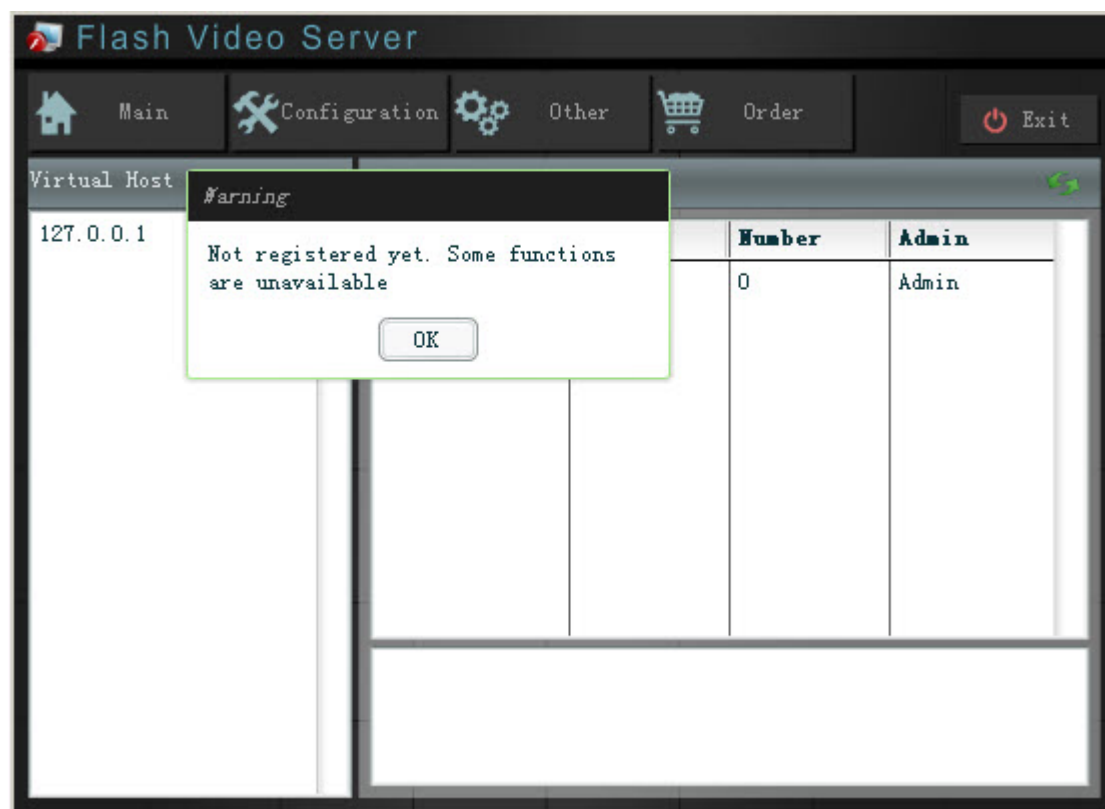
**Virtual host:** Type the name of virtual host before you modify the virtual host administrator password.

**Password:** New password of the virtual host administrator.

**Confirm:** Type the new password again.

## 2.5 Register

This is a trial version which has the 10-minute limitation on playing and 2-minute limitation on recording, the warning dialog box pops up at logon for reminding you:



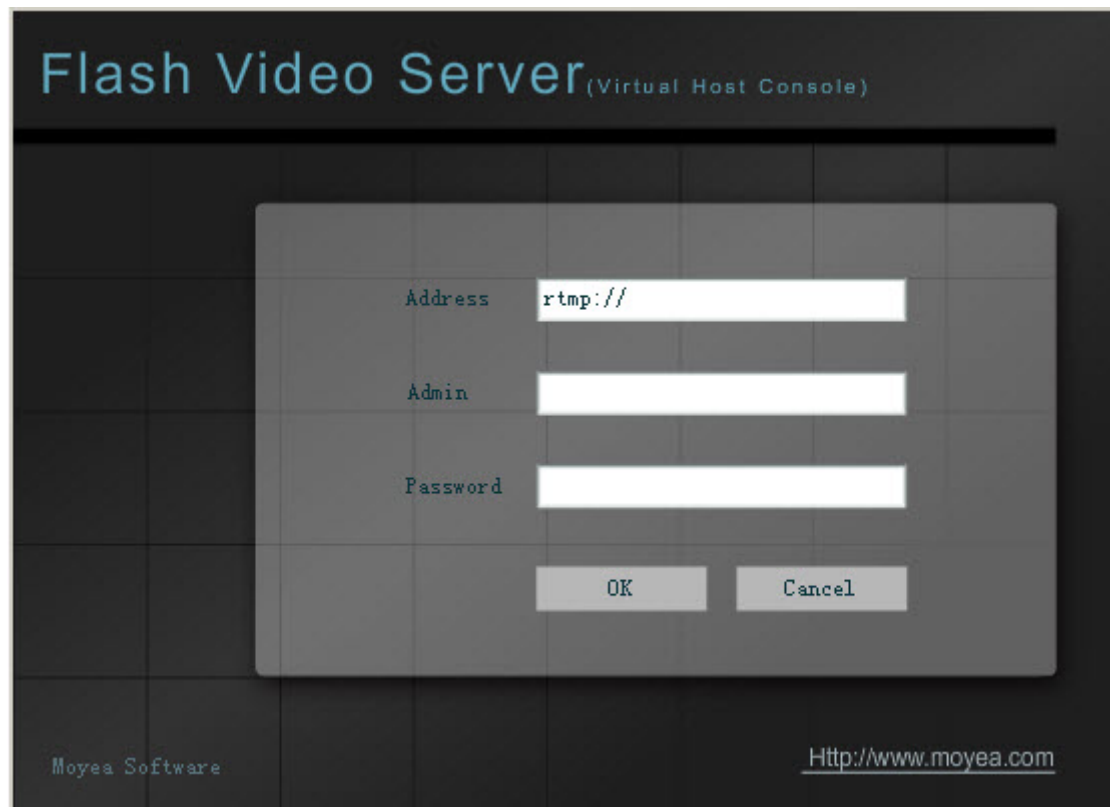
You may have to register so as to use the full version. By clicking **Order** button, the following screen will pop up. Just click on the [link](http://www.flvsoft.com/flash_video_server/purchase) to purchase, you can experience the full version immediately:



After a successful registration, no warning dialog box appears when you login again.

### 3. Virtual Host Manager

#### 3.1 Login



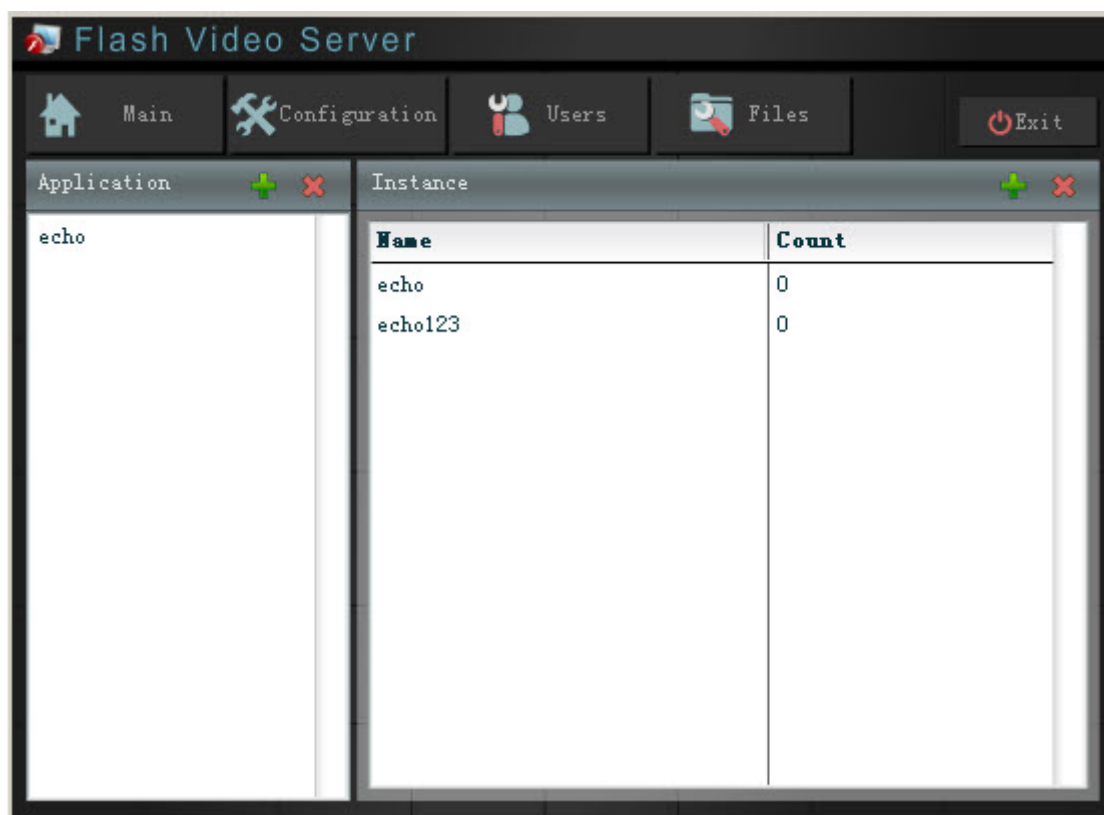
**Address:** Domain name or IP address of the virtual host.

**Admin:** Virtual host administrator name.

**Password:** Virtual host administrator password.


**Note:** There is a default virtual host (127.0.0.1) in the system, administrator name and password of this host is the same as the FVS administrator name and password. Besides, FVS administrator has the power to access any virtual host of the system.


## 3.2 Main Interface



**Application:** The current application list built by the virtual host.

**Instance:** All instances of the selected application.

: Add an application or instance. Select application which the instance is attached to before adding an instance.

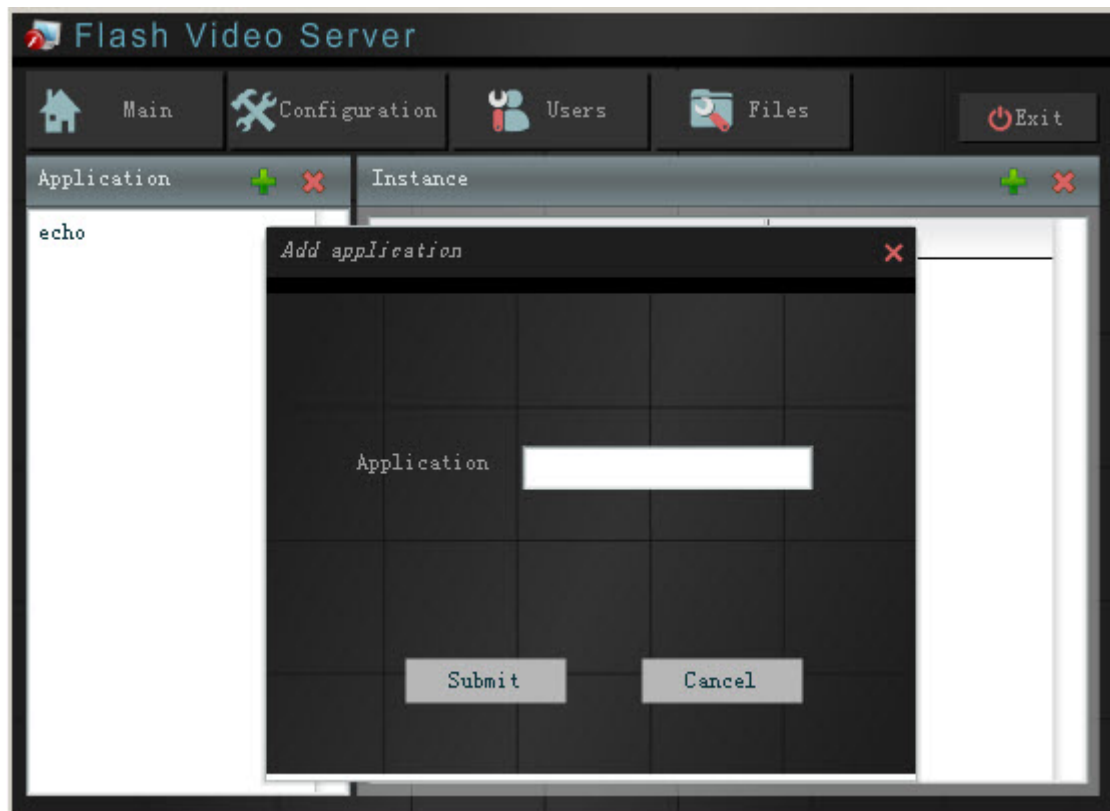
: Delete an application or instance. This action will make the application or instance forbidden to use.

**Configuration:** Go to the configuration screen by clicking this tag.

**Users:** Go to the user management screen of the virtual host.

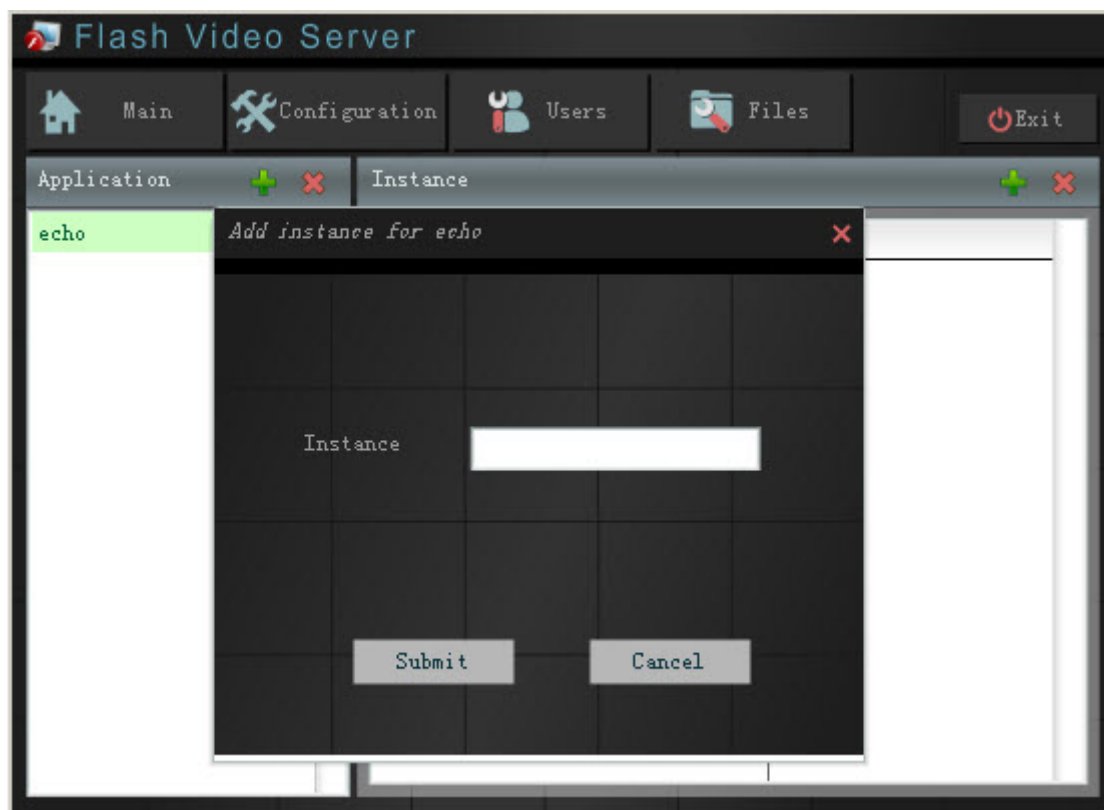
**Files:** Specify power for the virtual host file generated in server.

### 3.2.1 Add Application



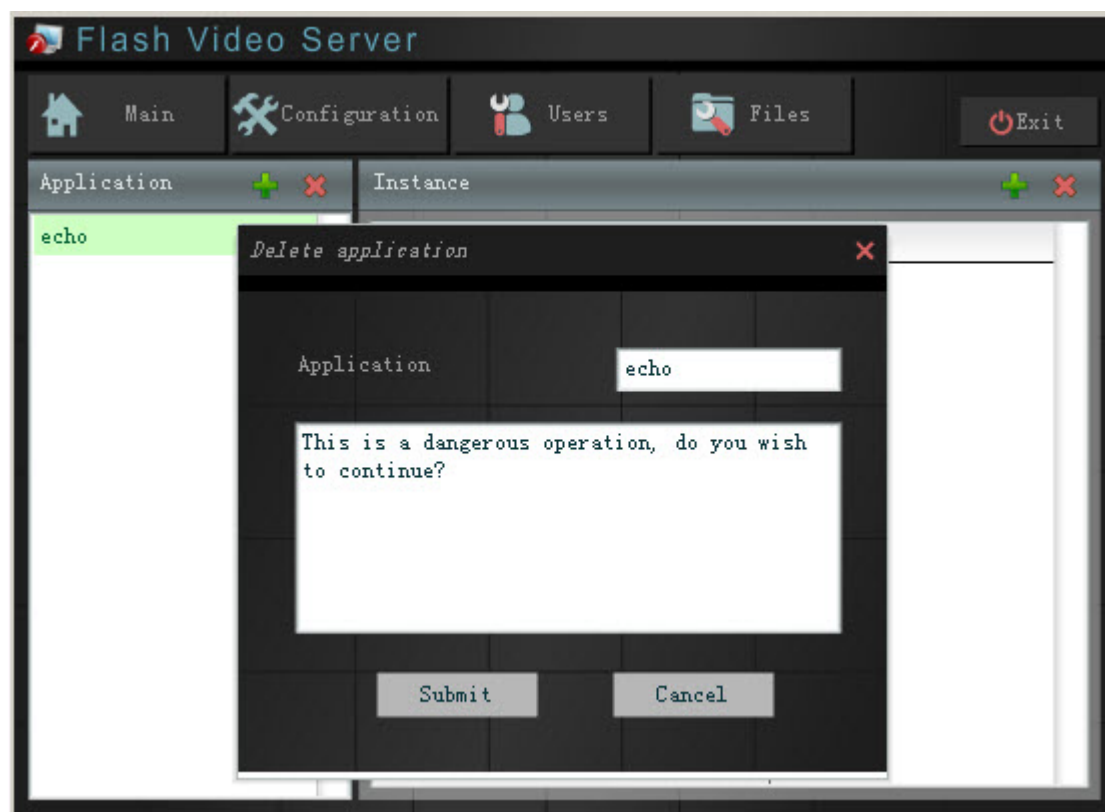
**Application:** Name of the application to add.

### 3.2.2 Add Instance



**Instance:** Name of the instance to add. Check application which the instance is attached to before adding an instance.

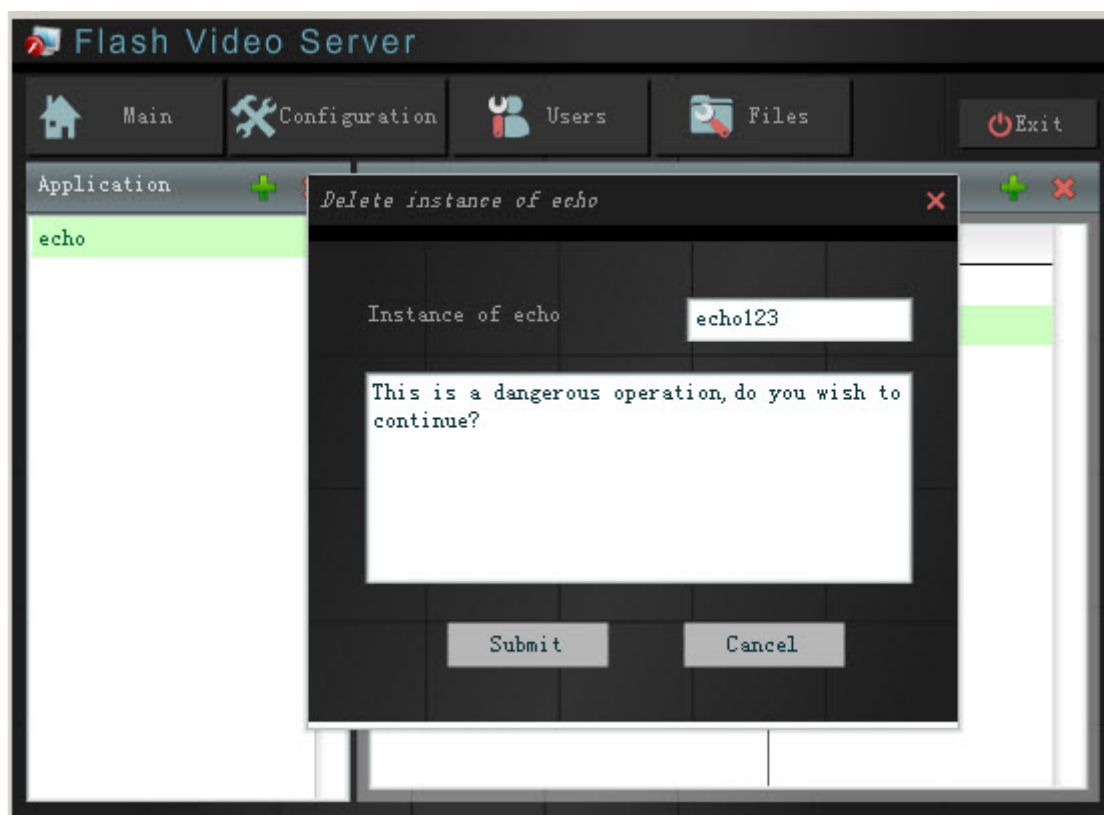
### 3.2.3 Delete Application



After deletion, all the data of the application will be removed completely.

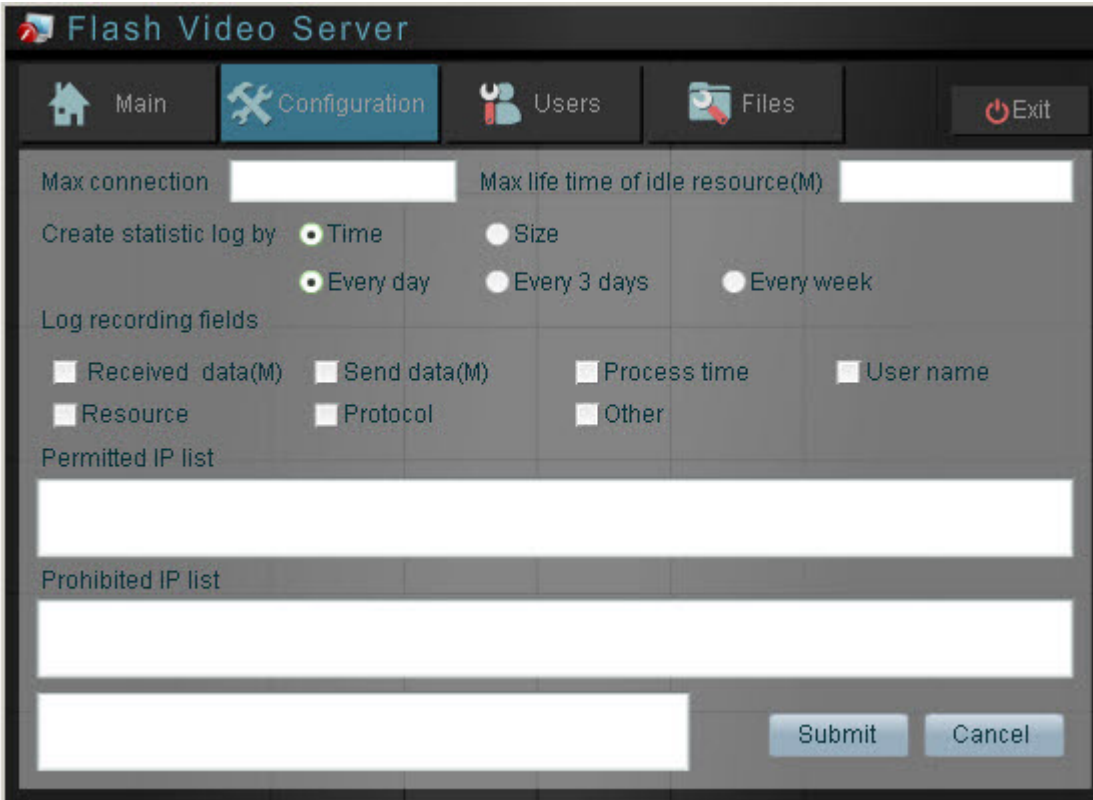
Note: this is a dangerous operation, you'd better save the data before you delete. (The same is true for delete instance)

### 3.2.4 Delete Instance



### 3.3 Configuration

This interface mainly for statistic log and IP filter configurations of the virtual host.



### 3.3.1 Fields Description

**Max connection:** Specify the max connection in this virtual host.

**Max life time of idle resource:** Specify time interval for unloading the idle application or instance from system.

**Create statistic log by:** Please refer to the “[Abnormal Log](#)”.

**Log recording fields:** The fields below are available for recording statistic log.

**Received data (M):** The number of bytes received from users when the virtual host processes requests of users (in megabyte).

**Send data (M):** The number of bytes sends to users when the virtual host processes requests of users (in megabyte).

**Process time:** Time taken by the host to process requests of users (in milliseconds).

**User name:** Name of connected users.

**Resource:** Name of the resource which users request.

**Protocol:** Name of the protocol exchanged between user and the host.

**Other:** Other related information.

**Permitted IP list:** IP allowed by the host

**Prohibited IP list:** IP forbidden by the host

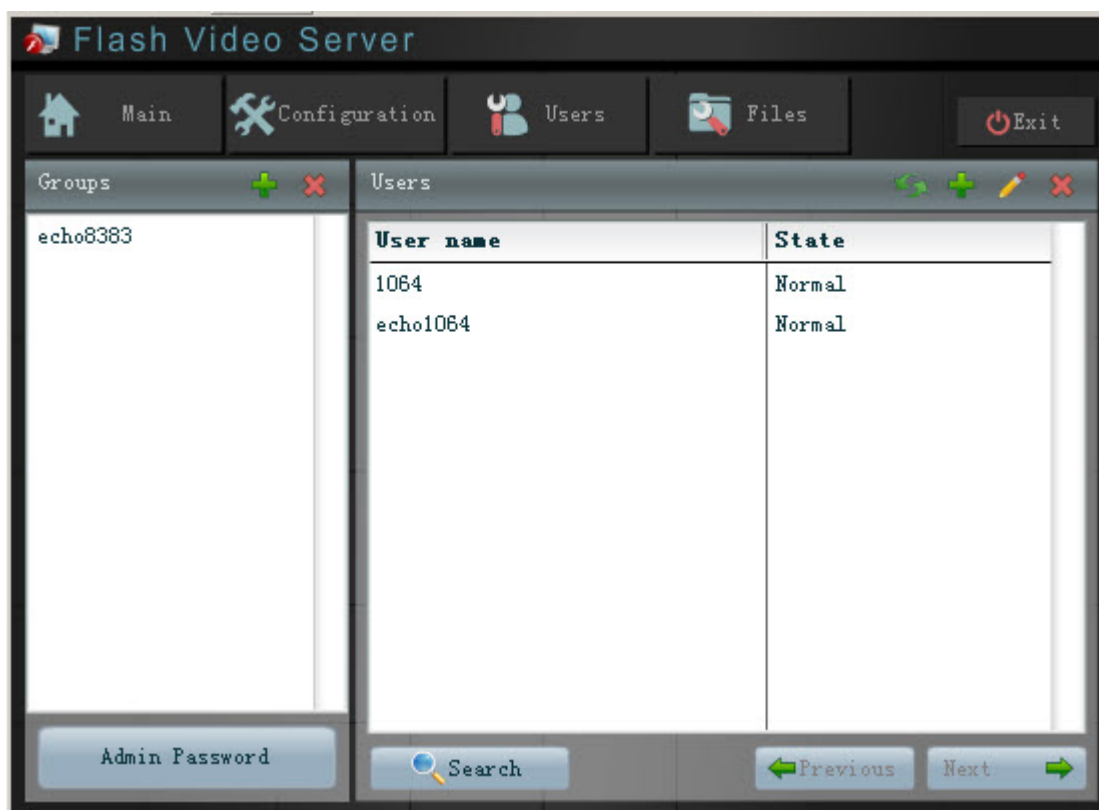
**PS:** Every IP should be separated by “;”. IP segments can be specified by “-”, such as “192.168.0.1-192.168.0.5;192.168.0.135”.

### 3.3.2 Rules for IP Filter

- A). When the “**Permitted IP list**” is empty but “**Prohibited IP list**” is not empty, this means all IP are allowed to access except the ones in “**Prohibited IP list**” box.
- B). When the “**Prohibited IP list**” is empty but “**Permitted IP list**” is not empty, this means only IP in “**Permitted IP list**” box are allowed to access.
- C). When the two boxes are all empty, all IP are allowed to access.
- D). When the two boxes are all not empty: first, search the “**Prohibited IP list**” box, if an IP was list here, then it is not allowed by the host; second, search the “**Permitted IP list**” box, if an IP was not list here, then it is also not allowed by the host.
- E). Search from top, stop when the corresponding item appears.

### 3.4 User Management

This interface is for virtual host administrator to manage users of the host.

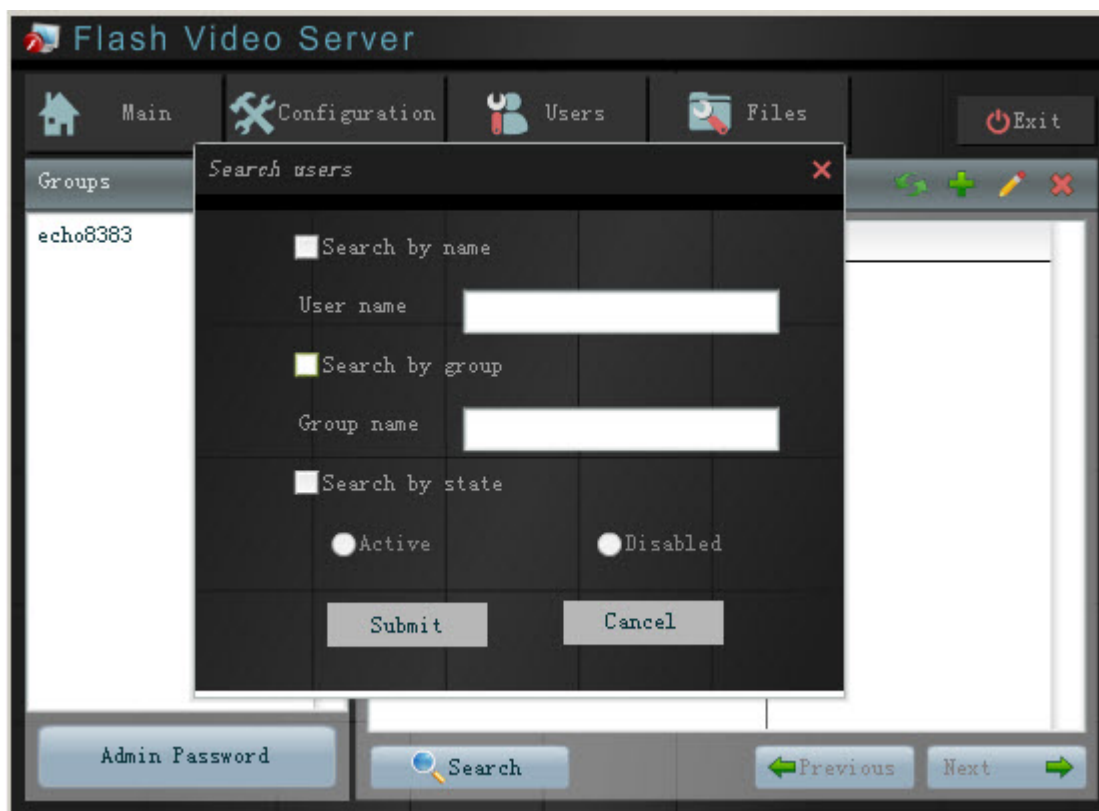



**Groups:** List of all groups in the host.


**User name:** List of all users searched by the host.


**Admin Password:** Modify the virtual host administrator password.


**Search:** Search users by name, group or state:



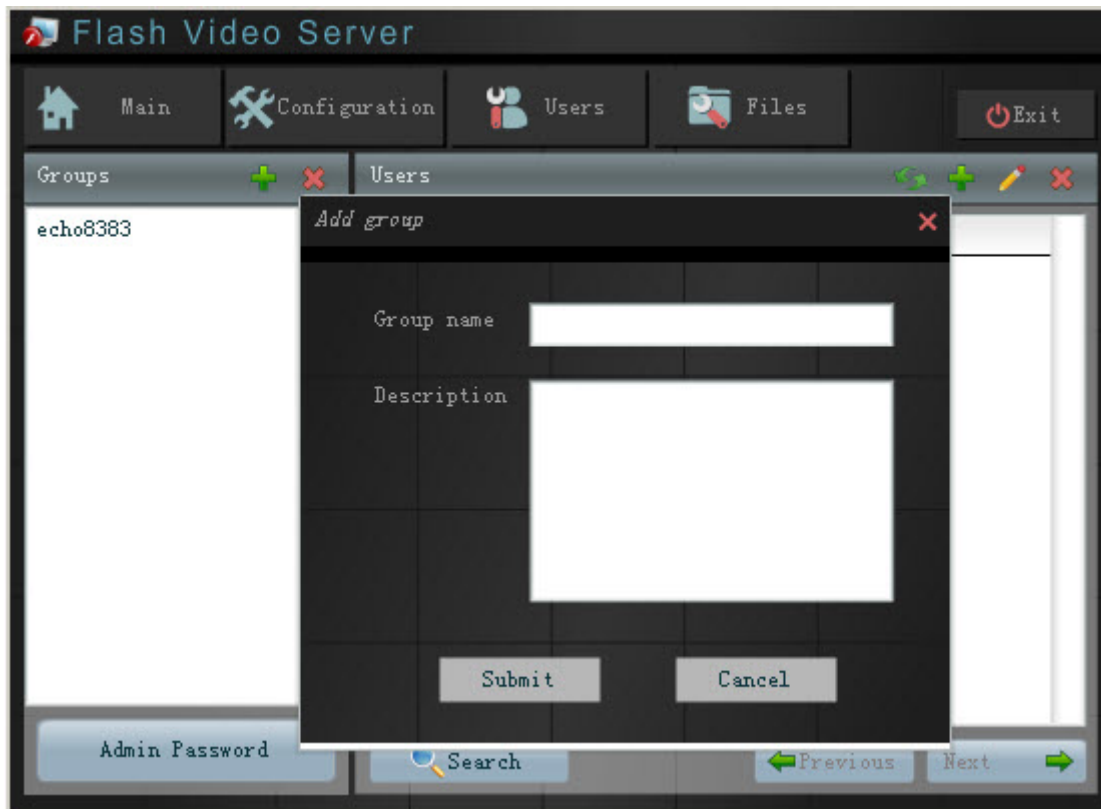
: Click this button to add group or user.

: Click this button to delete group or user.

: Modify the user information.

: Refresh the user list.

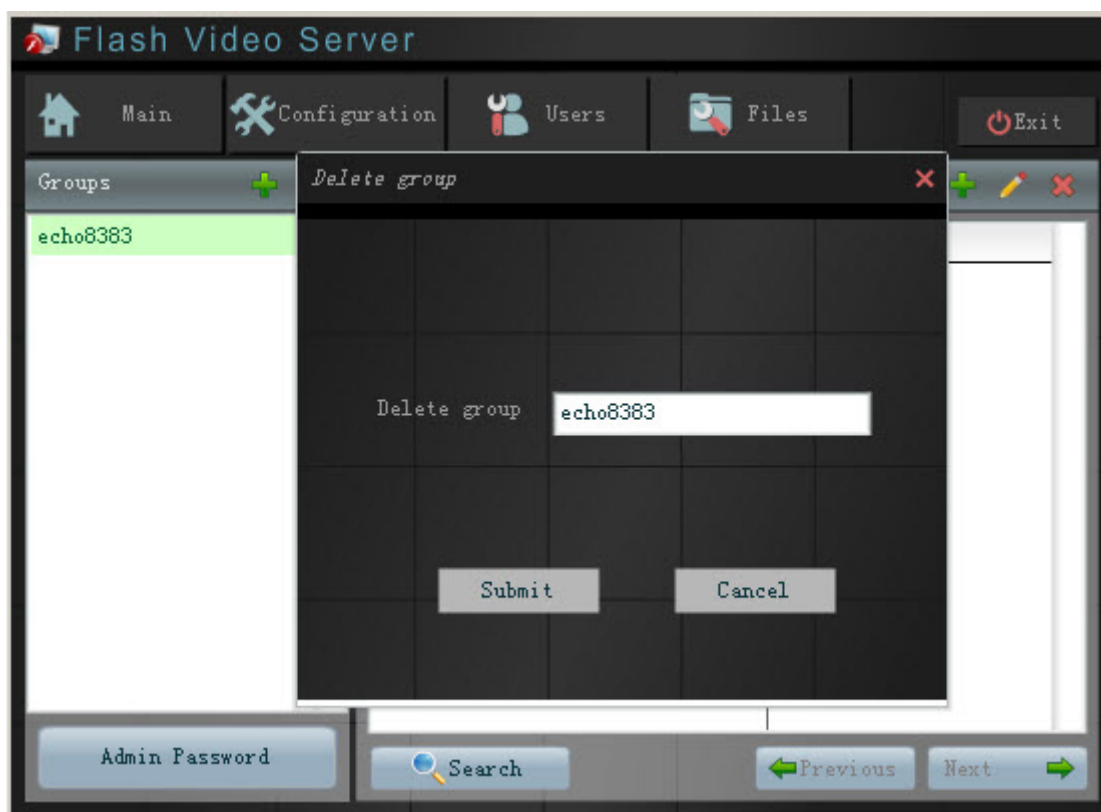
### 3.4.1 Add Group



**Group name:** Name of the group to add.

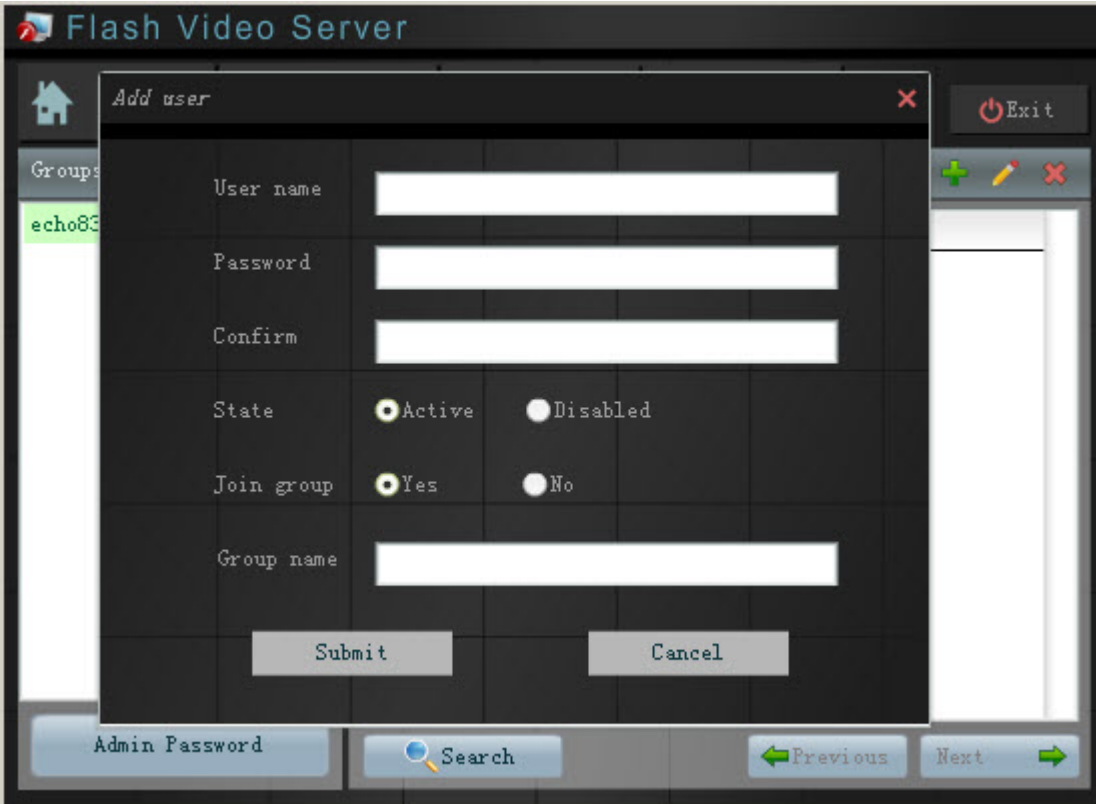
**Description:** Any related information about the group.

### 3.4.2 Delete Group



**Delete group:** Name of the group you have checked to delete.

### 3.4.3 Add User



The screenshot shows the 'Add user' dialog box in the Flash Video Server console. The dialog is titled 'Flash Video Server' and 'Add user'. It features a sidebar on the left with a 'Groups' section containing a list item 'echo83'. The main area of the dialog contains the following fields and controls:

- User name:** A text input field.
- Password:** A text input field.
- Confirm:** A text input field.
- State:** Radio buttons for 'Active' (selected) and 'Disabled'.
- Join group:** Radio buttons for 'Yes' (selected) and 'No'.
- Group name:** A text input field.
- Buttons:** 'Submit' and 'Cancel' buttons at the bottom.
- Footer:** 'Admin Password', 'Search' (with a magnifying glass icon), 'Previous' (with a left arrow), and 'Next' (with a right arrow).

**User name:** Name of user to add.

**Password:** Password of the added user.

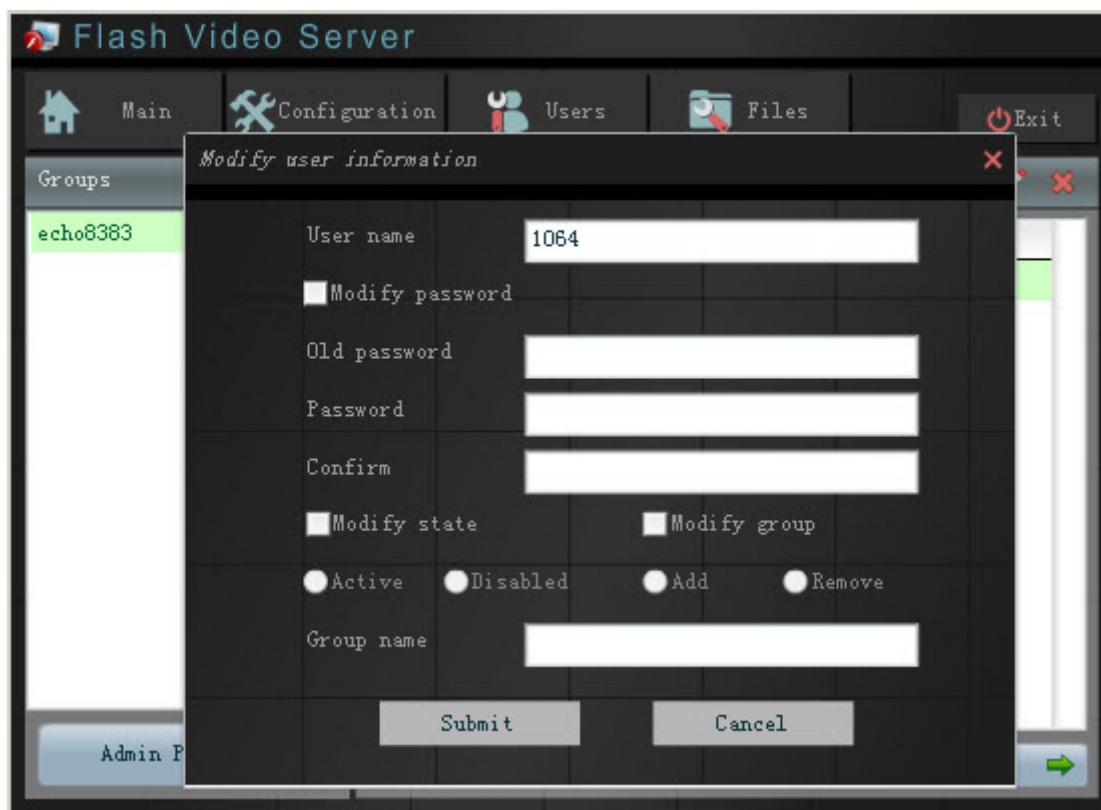
**Confirm:** Type the password above again.

**State:** Initialize the user state.

**Join group:** Whether the user agrees to join a group or not.

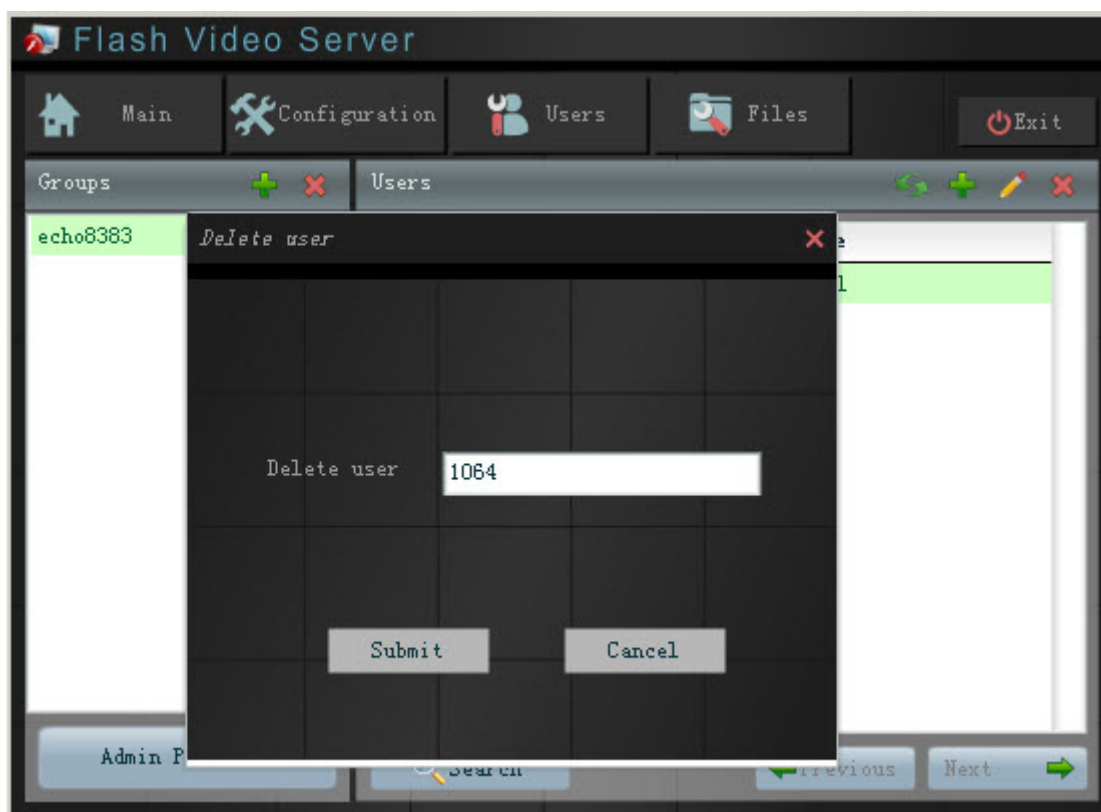
**Group name:** Name of the group the user agrees to join.

### 3.4.4 Modify User Information

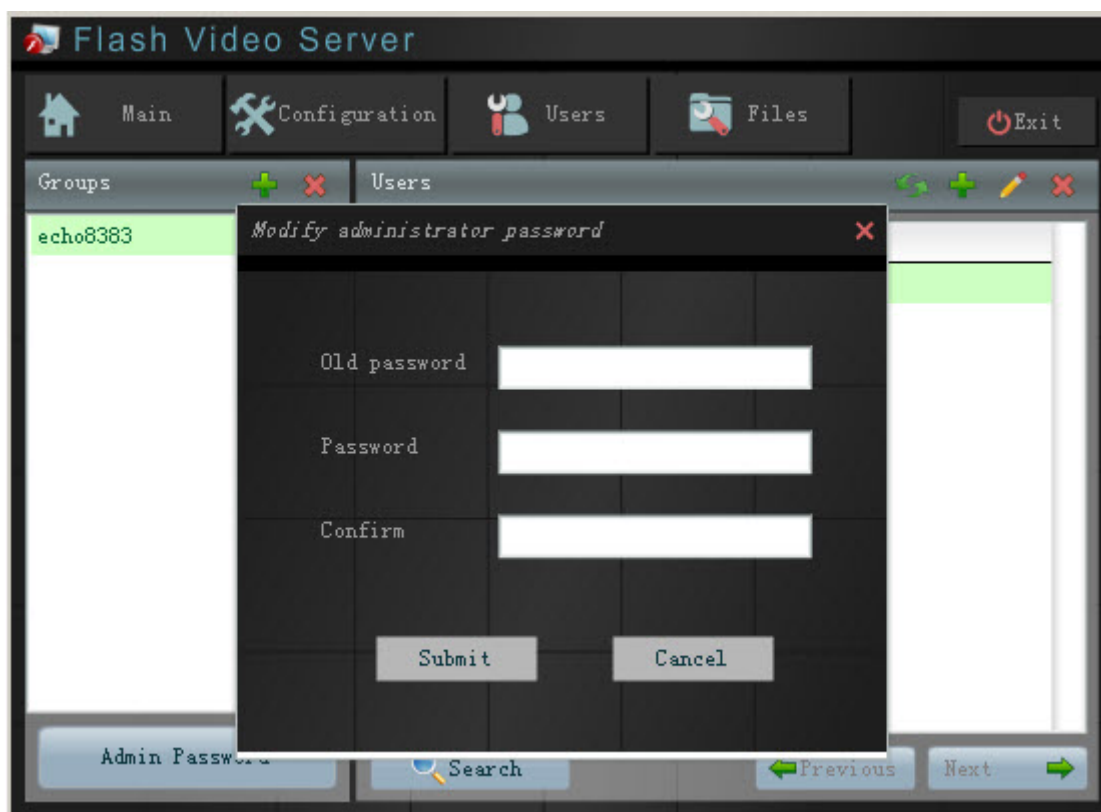


Check the section you want to modify first, and then input the information according to need.  
It is essential to specify a user before modification.

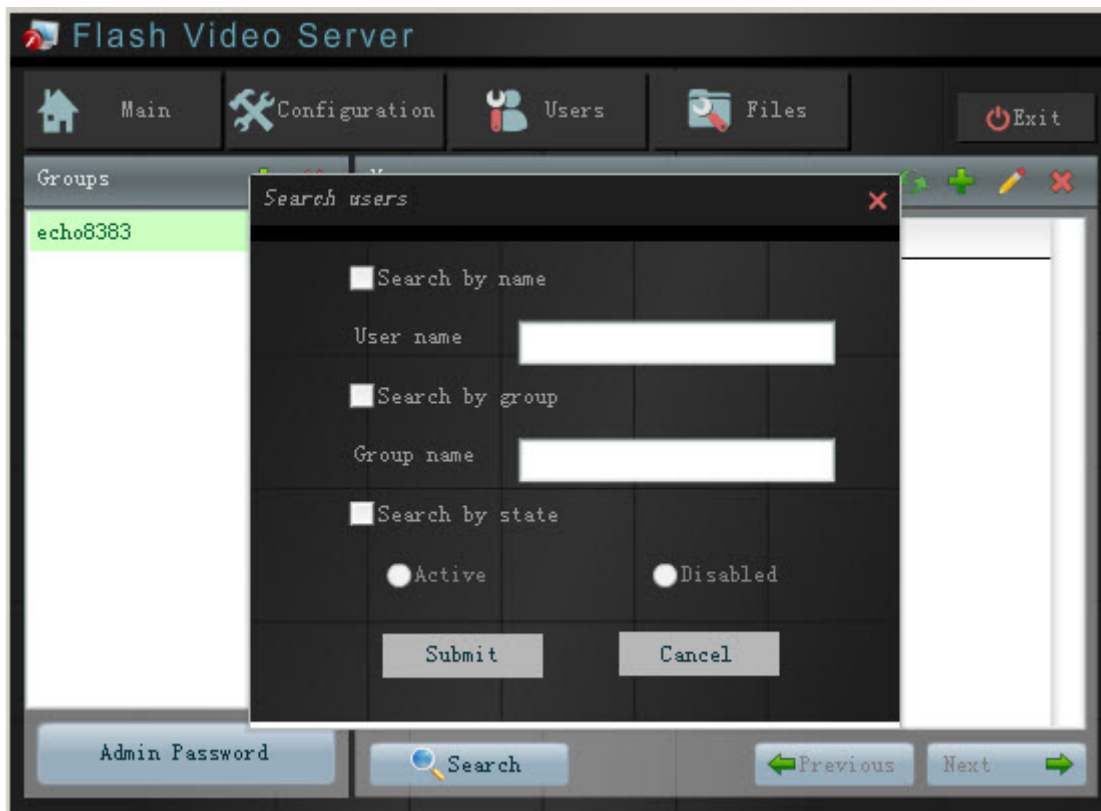
### 3.4.5 Delete User



### 3.4.6 Modify Virtual Host Administrator Password



### 3.4.7 Search Users



A). First, select the search mode; second, input the qualification to search.

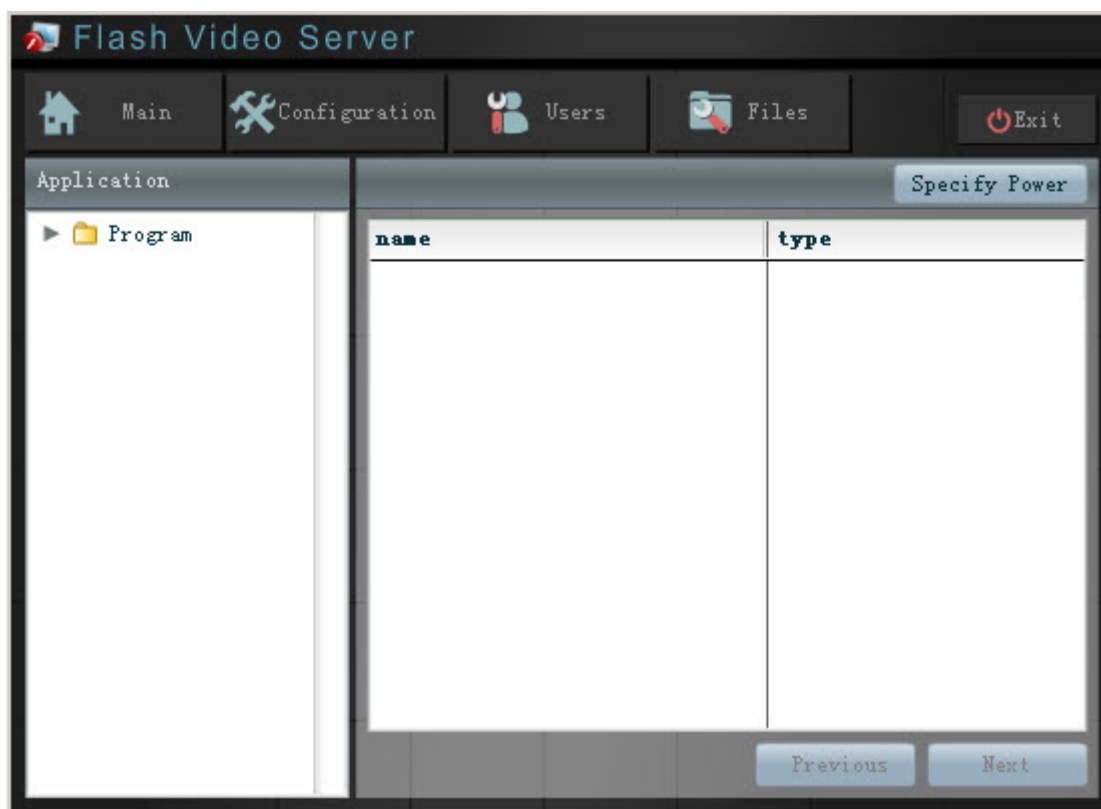
B). Search mode can be multiple, the Intersection is result.

For example, you check “**Search by state**” and “**Search by group**” at the same time; the result will be the users in the given group as well as in the specific state.

C). Wildcard character “%” can be used in searching users.

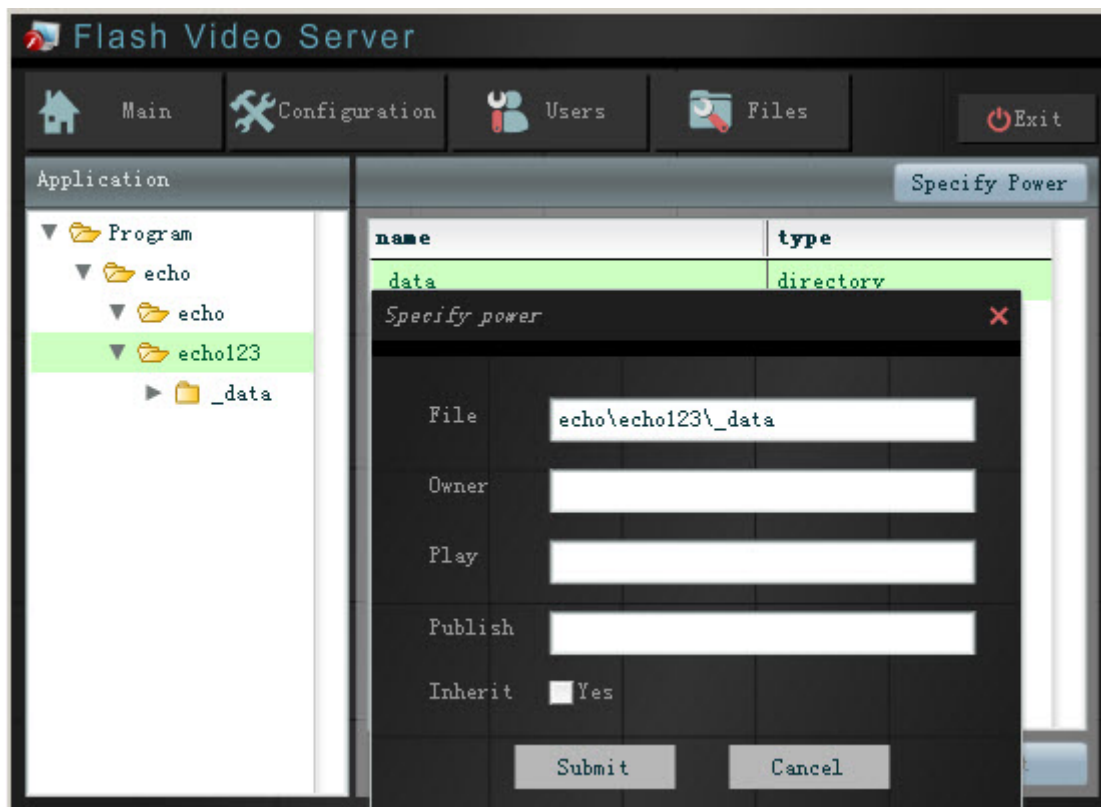
### 3.5 File Management

This interface is for granting different operation to the corresponding file in the host.



**Application:** Directory of all applications in the host.

The next level of application directory is instance directory; next the instance directory is data directory which can be specified power as follow:



- A). Owner:** Name of the file owner who has the right to perform read-write operation on the file.
- B). Play:** Grant read power to groups or users, separate the users or groups by “;”. Add “**u**” before user name; add “**g**” before group name, for example, when the user named “user1” and the group named “group1” have play power over one file, it should be write as “uuser1;ggroup1”.
- C). Publish:** Grant write power to groups or users, this operation only can perform on directory, the regulation is the same as “**Play**”.
- D). Inherit:** File and directory can inherit from power of parent directory. If the file selected, inherit. If not, the reverse applies. Default is inherited.